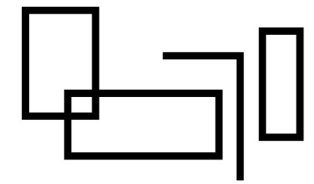


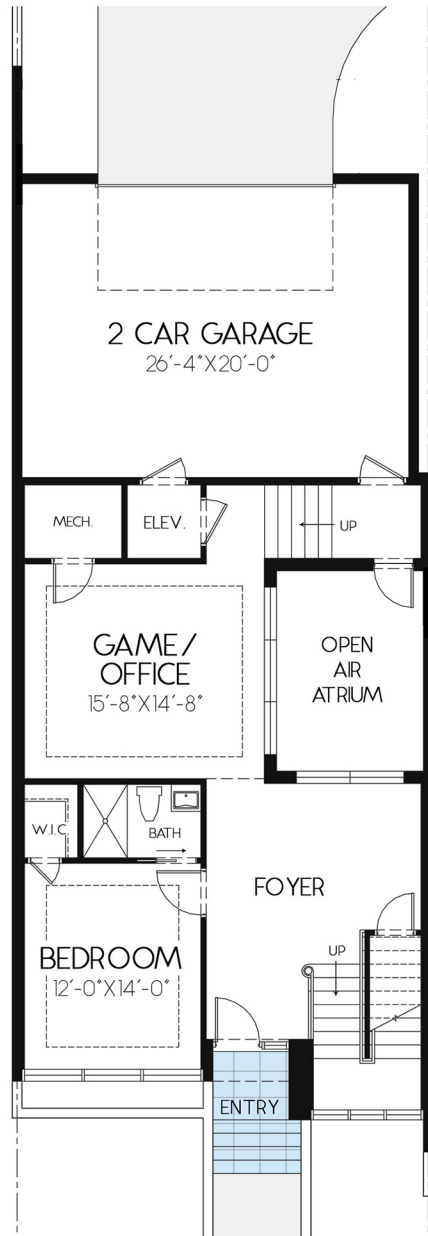
96 W. DAVIS BLVD.

4 BED / 4.5 BATH / OFFICE / 2 CAR GARAGE

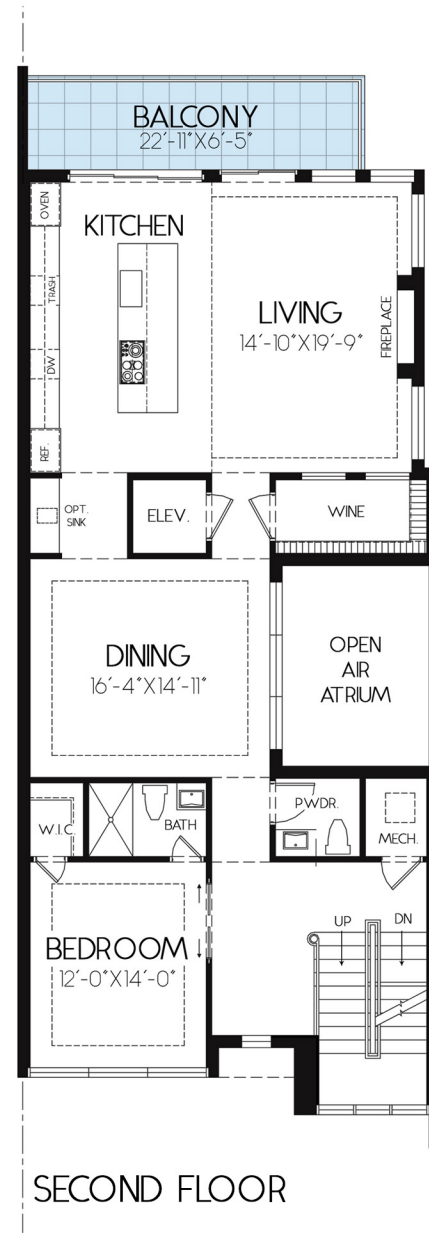


DAVIS POINT

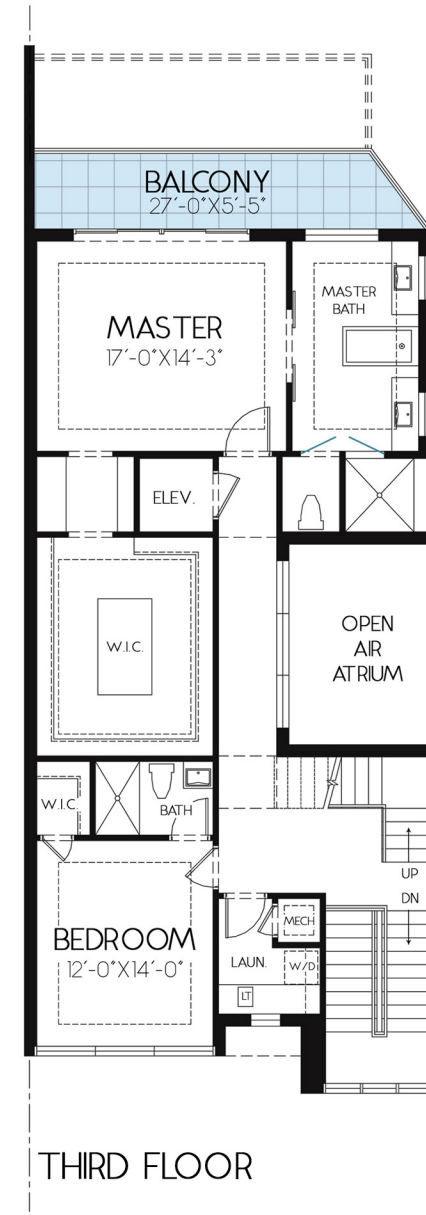
ISLAND LIFE • MOD STYLE



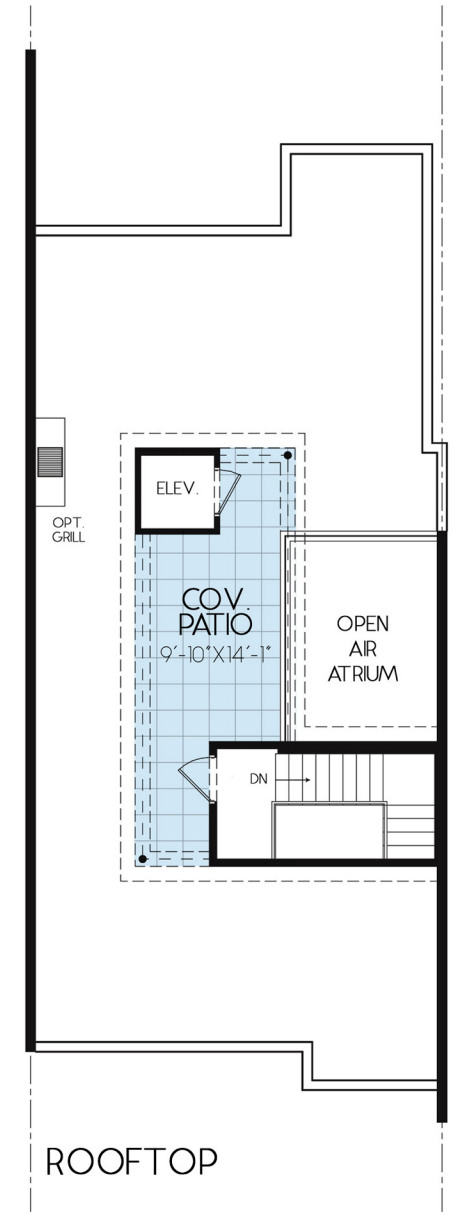
FIRST FLOOR



SECOND FLOOR



THIRD FLOOR



ROOFTOP

AREA CALCULATIONS

A/C LIVING	4,264 SF
BALCONY/ROOFTOP	1,768 SF
GARAGE	615 SF
TOTAL	6,647 SF

